

SYNTHETIC HAIR WIGS



Our Synthetic Wig range offers impeccable style, fantastic quality for instant results at an affordable price.

Spotlight - aka our best-selling and well known range of synthetic wigs. includes huge array of styles for a collection of Spotlight Wigs that really do dazzle!

With wigs that feature hand-tied techniques to give a realistic, natural finish, synthetic lace wigs and even the multi-feature partings of the Fashion Idol Premium Multi, the wig choices within the Synthetic range are endless - as are of the huge array of colours!

spotlight
LUXURIOUS WIGS

**fashion
idol¹⁰¹**
by Sleek

**fashion
idol¹⁰¹**
by Sleek

Premium Wig
100% Premium Tongable Synthetic Fibre

**wig
fashion**
COOL CUTS, SEXY SHADES



spotlight
LUXURIOUS WIGS

The Spotlight 101 Synthetic wigs are made of 100% premium synthetic fibre - meaning they are able to withstand hair styling.

A beautiful range of styles, these quality hair wigs feature a lightweight cap which can be adjusted for the perfect fit. Achieve instant glamour & style within seconds.

The Spotlight 101 range is divided into lace parting and lace front wigs, both providing a realistic natural finish due to the delicately hand-tied technique used to create these styles.

Find out more in a huge different range of hairstyles, lengths, colours and different features such as baby hair.

Designed to be the perfect fit, made from high-quality hair and the 101 fibre which can be tongable, these wigs are instant glamour quickly!

spotlight
LUXURIOUS WIGS

LACE FRONT & PARTING:

FREE PARTING 4" x 4":



BIANCA

Tight ringlet curls in this long centre parting wig. Lace front for realistic finish.

ORDER CODE: BIAN	
COLS	1, 1B, 2, 4, TT1B/30, TT1B/33, TT4/27, TT4/PINK
LOW STOCK	99J, F1B/30, F1B/33
LENGTH	26" (14" front layers)
WEIGHT	200g



AMBER

Deep wave curl, realistic 4" lace side parting & side flicked fringe detail. Premium tongable fibre.

ORDER CODE: AMBER	
COLS	TT1B/INDB, TT1B/ROSGLD, TT4/16/613, TT4/30/27
LENGTH	26"
WEIGHT	239g



DIAMOND

Sleek, super straight style with free 4" parting allowing this wig to be styled & also tongable.

ORDER CODE: DIAM	
COLS	1, 1B, 2, 4, AQUA, DARK RED, DARK BLUE, GREY, TT1B/30, TT1B/33, TT4/16/613, TT4/27, TT4/PINK
LOW STOCK	99J, F1B/30, F1B/33, TT4/30
LENGTH	26"
WEIGHT	235g



ESME

With a lace front, Esme Wig offers beautiful barrel curls in this mid length.

ORDER CODE: ESME	
COLS	1, 1B, 2, 4, T1B/30, T1B/PURPLE, T4/27
LENGTH	18"
WEIGHT	168g



VIVIAN

Modern blunt cut. Premium tongable fibre. Realistic 4" deep lace parting with lace front.

ORDER CODE: VIVIAN	
COLS	1, 1B, 2, 4, TT1B/GREYICE, TT1B/TEAL, TT6/27, TT99J/PURPLE
LENGTH	12"
WEIGHT	143g



CHRISSY

Glamorous loose curl style wave in this long wig with centre lace parting and lace front.

ORDER CODE: CHRISSY	
COLS	1, 1B, 2, 4, TT1B/30, TT1B/33, TT4/16/614, TT4/27, TT4/613, TT4/PLAVENDER
LENGTH	25" (20" front layers)
WEIGHT	225g



ATTY

30" long wig in natural, soft curl. 4" lace parting with baby hair. Premium tongable fibre.

ORDER CODE: ATTY	
COLS	1, 1B, 2, 4, TT1B/GREYPURPLE, TT4/12/27
LENGTH	30"
WEIGHT	193g



DONNA

Super long hair curls, with the Donna Wig which is set in a beautiful Hollywood curl pattern.

ORDER CODE: DONNA	
COLS	1, 1B, 2, 4, T4/AQUA, T6/27Q
LENGTH	28"
WEIGHT	185g



MELANY

Think glamour with the Melany Wig. A gorgeous, long bounce curl with a side-parting.

ORDER CODE: MELANY	
COLS	1, 1B, 2, 4, TT1B/GBLUE, TT4/27/613, TT4/ROSE PINK
LENGTH	23"
WEIGHT	208g



BROOKE

Beautiful curl pattern full of body and bounce, set in a stylish lace side parting.

ORDER CODE: BROOKE	
COLS	1, 1B, 2, 4, T1B/30
LENGTH	20"
WEIGHT	240g



VANIA

Short style bob that frames the face, with centre parting and added soft baby hair.

ORDER CODE: VANIA	
COLS	1, 1B, 2, 4, TT1B/COPPER
LENGTH	12-13"
WEIGHT	126g



NACKISSA

A beautiful, natural water wave curl in this stylish angle cut, that is shorter at the back.

ORDER CODE: NACKIS	
COLS	1, 1B, 2, 4, TT1B/33, TT99J/PURPLE
LENGTH	13-14"
WEIGHT	152g

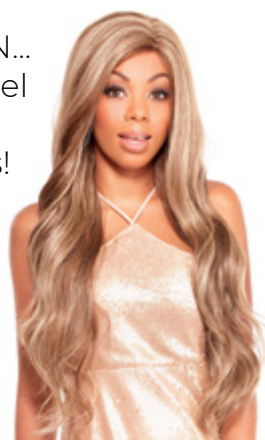


NADIDA

Nadida showcases a wavy hair pattern, which complements the beautiful layers.

ORDER CODE: NADIDA	
COLS	1, 1B, 2, 4, 613, F12/16/613, F1B/PURPLE/BLUE, TT1B/27, TT1B/30, TT1B/33, TT1B/DARKGREEN
LENGTH	30-31"
WEIGHT	260g

COMING SOON...
Nadida & Rachel
in unicorn
pastel colours!



RACHEL

A deep lace parting & realistic baby hair, glamorous long cascading curls for a beautifully natural wig.

Order code: RACHELS features a lace front - available in: TT1B/613, TT1B/DARKRED,

ORDER CODE: RACHEL	
COLS	1, 1B, 2, 4, F12/16/613, TT1B/27, TT1B/30, TT1B/33, TT1B/DARKGREEN
LENGTH	27-28"
WEIGHT	245g



VERADIS

Shoulder length, sharp, blunt cut wig style in a centre parting with added soft baby hair.

ORDER CODE: VERADIS	
COLS	1, 1B, 2, 4, TT1B/DARKRED, TT4/27
LENGTH	13.5-14.5"
WEIGHT	155g



VIOLA

Shorter style at the back, tapers to longer front to softly frame the face set in a side parting.

Order code: VIOLAS features a lace front - now available in: TT1B/ICEGREY, TT4/AQUA

ORDER CODE: VIOLA	
COLS	1, 1B, 2, 4, TT1B/ICEGREY, TT4/16/613, TT4/AQUA
LENGTH	13-17"
WEIGHT	150g

The Fashion Idol 101 Premium range is a collection of stylish modern wigs.

Beautifully natural, these wigs offer maximum comfort and designed using the high-quality synthetic fibre that means these wigs are able to be heat-styled for ultimate style.

Within the premium range discover multiple partings and baby hair for the most realistic finish.



MULTI-FEATURE PREMIUM WIGS: These wigs can be worn in a variety of ways, including left, centre, right parting or a pin up style.



DRAYA

This customisable wig, is a full, straight wig featuring layers for natural movement and style.

ORDER CODE: DRAY	
COLS	1, 1B, 2, 4, 613, TT1B/ GREYBLUE, TT4/613, DARKRED, F1B/30, GREY, TT1B/33, TT4/27, TT4/30, TT99J/PEACH
LOW STOCK	F1B/33
LENGTH	26" (15" front layers)
WEIGHT	225g

RACHEAL

Straight bob style rounded to frame the face with movement parting enabling styled side fringe.

ORDER CODE: RACH	
COLS	1, 1B, 2, 4, 99J, F1B/30, F1B/33
LENGTH	7-10"
WEIGHT	116g



TIFFANY

Tiffany features a natural crimp wave, movable parting creates realistic finish to this look.



ORDER CODE: TIFF	
COLS	1, 1B, 2, 4, 613, DARK RED, F1B/33, GREY, TT1B/33, TT1B/DARK BLUE, TT1B/LILAC, TT4/27, TT4/30
LOW STOCK	F1B/30
LENGTH	13-23"
WEIGHT	233g



AMELIE

Complete with sweeping style fringe, this rounded long bob has volume and style.



CANDACE

Long, straight layers and sweeping side fringe style make the Candace Wig a winner.



COCO

Very full front fringe with full volume smooth, rounded pixie crop style wig.

ORDER CODE: AMELIEWIG	
COLS	1, 1B, 2, 4, 613, 99J, DYT4/30, F12/16/613, F1B/30, F1B/33, F4/27
LOW STOCK	27, DARK RED, F1B/99J
LENGTH	15" (9" front layers)
WEIGHT	122-126g

ORDER CODE: CANDACEWIG	
COLS	1, 1B, 2, 4, 613, 99J, DARK RED, F12/16/613, F4/27, TT1B/30, TT4/27
LOW STOCK	27, F1B/30, F1B/33, TT1B/33
LENGTH	23" (17" front layers)
WEIGHT	187-193g

ORDER CODE: COCOWIG	
COLS	1, 1B, 2, 27, 4, 613, 99J, DARK RED, DYA1B/26J, DYT1B/27, DYT4/30, F1B/30, F1B/33, DYT1B/DARKRED
LOW STOCK	F1B/99J, F4/27
LENGTH	7-10"
WEIGHT	73.5-76.5g



EBONY

Smooth and sleek, the Ebony Wig has side fringe detail.



EVIE

Long straight wig featuring centre parting, layers and full fringe.



GINA

A fun stylised pixie crop that is tongable & comfortable.

ORDER CODE: EBONYWIG	
COLS	1, 1B, 2, 4, 613, DYT4/30
LOW STOCK	27, 99J, DARKRED, DYT1B/27, DYT1B/DARKRED, F12/16/613, F1B/30, F1B/33, F1B/99J, F4/27
LENGTH	6-9"
WEIGHT	81-84g

ORDER CODE: EVIE	
COLS	1, 1B, 2, 4, T1B/33, T4/PINK
LENGTH	23" (16" layers)
WEIGHT	194g

ORDER CODE: GINA	
COLS	1, 1B, 2, 4, MAROON, PURPLE, TT1B/27, TT1B/DARKBLUE, TT1B/GREY BLUE
LENGTH	6-10"
WEIGHT	75g



IMAN

Gorgeous centre parting in super sleek straight style.

ORDER CODE: IMANWIG	
COLS	1, 1B, 2, 27, 4, 613, 99J, F1B/30, F1B/33, TT1B/30, TT1B/33, TT4/27,
LENGTH	21"
WEIGHT	180g



KARYN

Long deep wave curl pattern with centre parting.

ORDER CODE: KARYN	
COLS	1, 1B, 2, 4, 99J, TT1B/30, TT1B/33, TT4/27
LOW STOCK	613
LENGTH	22"
WEIGHT	170g



KIKI

Sweeping style bob, which is slightly longer at the nape.

ORDER CODE: KIKIWIG	
COLS	1, 1B, 2, 4, DYT1B/27, F1B/30, DYT1B/DARKRED, DYT4/30,
LOW STOCK	99J, DARK RED, F1B/33, F1B/99J, F4/27
LENGTH	6-10"
WEIGHT	95g



KIMBERLEY

Texturised sweeping pixie crop with side parting.

ORDER CODE: KIMB	
COLS	1, 1B, 2, 4, FF1B/30, F1B/33, FF1B/DARKRED
LENGTH	10"
WEIGHT	70g



MIMI

Choppy layers creating a full volume style in this pixie crop.

ORDER CODE: MIMIWIG	
COLS	1, 1B, 2, 4, 99J, DYT1B/27, DYT1B/DARKRED, F1B/33,
LOW STOCK	DARK RED, GREY, 44
LENGTH	8.5"
WEIGHT	75g



NADIA

Gorgeous tight curl in a shoulder length style - ultimate relaxed glam.

ORDER CODE: NADIWIG	
COLS	1, 1B, 2, 27, 4, 99J, DARK RED, DYT4/30, F1B/30, F1B/33, F1B/99J, F4/27, TT1B/30, TT1B/33, TT4/27
LENGTH	15-16"
WEIGHT	120g



RIHANNA

Full fringe with straight style long bob, flicked & rounded to frame the face.



NIKKI

Poker straight, super long wig complete with full fringe in rounded volume style.



SINEAD

Mid-length super straight wig, featuring a long full fringe.

ORDER CODE: RIHA	
COLS	1, 1B, 2, 4, 99J, GREY
LENGTH	12-13"
WEIGHT	170g

ORDER CODE: NIKKIWIG	
COLS	1, 1B, 2, 27, 4, 613, 99J, DARKRED, DYT4/30, F12/16/613, F1B/30, F1B/33, F1B/99J, F4/27, TT1B/30, TT1B/33, TT4/16/613, TT4/27
LENGTH	26"
WEIGHT	190g

ORDER CODE: SINEADWIG	
COLS	1, 1B, 2, 4, 99J, DARKRED, DYT4/30, F12/16/613, TT1B/30, TT1B/33, T4/27
LOW STOCK	613, F1B/30, F1B/33, F1B/99J, F4/27
LENGTH	16-21"
WEIGHT	120g



TINA

Shoulder length straight cut with a full fringe for a natural look.

ORDER CODE: TINA	
COLS	1, 1B, 2, 4, BURGUNDY, TT4/16/613, TT6/23, TT6/27
LENGTH	14"
WEIGHT	179g



VICKY

Mid length super straight style with a full rounded fringe.

ORDER CODE: VICKY	
COLS	1, 1B, 2, 4, F12/16/613, TT1B/ROSE PURPLE, TT4/27
LENGTH	20"
WEIGHT	183g



YA-YA

Middle parting in this tight Kinky - Jerry Curl Wig.

ORDER CODE: YAYA	
COLS	1, 1B, 2, 4, DARK RED, F1B/30, F1B/33, GREY, TT1B/33, TT4/27, TT4/30
LENGTH	10"
WEIGHT	145g



Embodying style and a sense of fun, the Fashion Idol 101 Synthetic wigs feature the incredible Sleek 101 Fibre meaning they are 100% high quality and able to be heat styled up to 200 °C.

The Fashion Idol 101 Wigs offer a natural hairline, with handmade full lace at the front & back allowing for a range of parting options. These playful styles are great for a natural but styled look, with some even having that beautiful baby hair.



ABIOLA

Crimp, textured hair, the Abiola Wig is mid length with a centre parting and baby hair.

ORDER CODE: ABIO	
COLS	1, 1B, 2, 4, TT1B/33, TT4/27
LOW STOCK	99J, F1B/30, F1B/33, TT4/30
LENGTH	20" (15" front layers)
WEIGHT	135g



ELLIE

Soft, silky lengths of straight hair that hug the jaw-line for a modern bob style, complete with baby hair.

ORDER CODE: ELLIE	
COLS	1, 1B, 2, 4, FS1B/30, FS1B/33, FS4/27
LENGTH	11"
WEIGHT	110g



INDIA

With a natural wave pattern, the India wig is extremely long with huge volume.

ORDER CODE: INDIA	
COLS	1, 1B, 2, 27, 4, 613, 99J
LENGTH	28"
WEIGHT	235g



KIZZY

Thin spiral curls, for a voluminous, fun style.

ORDER CODE: KIZZY	
COLS	1, 1B, 2, 27, 4, TT4/27
LENGTH	12-14"
WEIGHT	140g



KOURTNEY

Mid length super straight style with a full rounded fringe.

ORDER CODE: KOUR	
COLS	1, 1B, 2, 4, 613, 99J, F1B/30, GREY, TT1B/33, TT1B/AQUA, TT1B/GREY/PURPLE, TT4/PINK, TT1B/VIOLET, TT4/27
LOW STOCK	F1B/33
LENGTH	27" (16" front layers).
WEIGHT	230g



RIANNE

Middle parting in this smooth, silky straight style with layers.

ORDER CODE: RIANNE	
COLS	1, 1B, 2, 27, 30, 4, 613, TT4/27
LOW STOCK	33, T1B/30, TT1B/33
LENGTH	24" (16 front layers)
WEIGHT	200g

wig fashion

COOL CUTS, SEXY SHADES

Extremely great value, the Wig Fashion collection offers a brilliant choice of hairstyles- the perfect essential for customers who want to change their style often.

Featuring sleek, silky styles to afro curls to super long styles or cute little bobs, this range is the epitome of diversity leaving your customers spoilt for choice.

With some of these wigs, named after icons, this range is perfect to achieve style, drama and bring out the inner diva.





AMMA

Short, boy cut bob that hugs the jawline and features a side sweeping fringe with tapering at the nape.

ORDER CODE: AMMA	
COLS	1, 1B, 2, 4, 99J, FS1B/30, FS1B/33, FS4/27,
LENGTH	9-10"
WEIGHT	100g



ANGELINA

Long synthetic wig with a centre parting & layering around the face, with curled ends for a voluminous look.

ORDER CODE: ANGE	
COLS	1, 1B, 2, 4,
LENGTH	26"
WEIGHT	175g



BEYONCE

Long, razor cut layers hug the face and is finished with a face framing fringe.

ORDER CODE: BEYONCE	
COLS	1, 10, 12, 16, 1B, 2, 4, 6, 613, 8, 99J, DYT4/30, FIRE RED, F10/16, F1B/P30, F1B/P33, F24/613, F27/P613, F4/P27, P6/P27, TT1B/30, TT1B/33, TT4/27, TT4/30, TT4/33
LENGTH	22" (12" front layers)
WEIGHT	150g



BIG AFRO

Big afro wig of soft, fine curls that resemble real afro texture hair.

ORDER CODE: BIGAFRO	
COLS	1, 1B, 2, 4
LOW STOCK	BLUE
LENGTH	5-6"
WEIGHT	65g



CRYSTAL

Smooth, silky, shoulder hugging, Cleopatra style with a side fringe.

ORDER CODE: CRY	
COLS	1, 1B, 2, 4, F1B/30, F1B/33
LENGTH	15"
WEIGHT	125g



ERIN

A mix of short to long layers & cuts for a choppy, layered hairstyle.

ORDER CODE: ERIN	
COLS	1, 1B, 2, 4, 613, 99J, TT1B/30, TT4/27, TT4/30
LOW STOCK	DYT4/30, F1B/30
LENGTH	26" (9" shortest layers)
WEIGHT	150g



ESTELLE

Trendy asymmetric bob with a rounded definition to one side and a silky glossy, texture.

ORDER CODE: ESTEL	
COLS	1, 1B, 2, 4, 99J, DYT1B/27, DYT4/30, FS1B/30, FS1B/33,
LOW STOCK	280, 350, 613, HL1B/BLUE, HL4/30
LENGTH	6" one side gradient to 9"
WEIGHT	75g



HALLE

Short, high top wig with pin curls & fringe. This wig is razor cut to taper at the nape & features wet look style.

ORDER CODE: HALLE	
COLS	1, 1B, 2, 280, 4, F1B/P30, F1B/P33
LENGTH	6-7"
WEIGHT	75g



HANNAH

Bob style with tight, thin spiral curls.

ORDER CODE: HANNAH	
COLS	1, 1B, 2, 4, 99J
LENGTH	15"
WEIGHT	165g



JADA

Long, feathered lengths rest just below the shoulder with a smooth, elegant finish.

ORDER CODE: JADA	
COLS	1, 1B, 2, 4, 613, FS12/16/613, FS1B/30, FS1B/33
LENGTH	21" (11" front layers)
WEIGHT	165g



JUMBO AFRO

Perfect to create an afro style statement, these fine curls mirror Afro hair styled in a dramatic fashion.

ORDER CODE: JUMBOAFRO	
COLS	1, 1B, 2, 4, PINK,
LENGTH	16"
WEIGHT	118g



JENNIFER

Silky straight, shoulder length wig with razored ends, a centre parting & layers around the face.

ORDER CODE: JEN	
COLS	1, 1B, 2, 4,
LENGTH	19" (8-9" front layers)
WEIGHT	115g



JENNY

Tight, Jerry Kinky Curls, in this layered long bob style wig with centre parting.

ORDER CODE: JENNY	
COLS	1, 1B, 2, 4, T1B/27
LENGTH	15" (9" front)
WEIGHT	226g



MACY

Mid length wig, made of tight, corkscrew curls.

ORDER CODE: MACY	
COLS	1, 1B, 2, 4, FS1B/30, FS1B/33, FS1B/99J, FS4/30/27
LENGTH	7-8"
WEIGHT	120g



JESSIE

Shoulder length wig of loose, cascading waves. Full of volume, bounce & features a fringe.

ORDER CODE: JESSIE	
COLS	1, 1B, 2, 4, FS1B/30, FS1B/33,
LENGTH	16"-17"
WEIGHT	160g



MADONNA

Features razor cuts, layers, outward flicks at the ends, centre parting & long sweeping fringe.

ORDER CODE: MADONNA	
COLS	1, 1B, 2, 4, 613,
LOW STOCK	FS1B/30
LENGTH	21" (10" front layers)
WEIGHT	155g



KIMORA

Long, tousled curls with a smooth, side swept fringe- the ultimate bohemian look.

ORDER CODE: KIMOR	
COLS	1, 1B, 2, 4, 613, TT4/27, FS1B/30, TT1B/30
LOW STOCK	DYTT4/30, FS1B/33, FS1B/99J, TT1B/33
LENGTH	25"
WEIGHT	165g



MEAGAN

Smooth long bob with razored long layers to frame the face and side swept fringe.

ORDER CODE: MEAGAN	
COLS	1, 1B, 2, 4, 99J, FS1B/30, FS1B/33, HL1B/33
LENGTH	15"
WEIGHT	115g



NIA

Sleek, sophisticated wig with softly feathered ends subtly wrapping around the neck.

ORDER CODE: NIA	
COLS	1, 1B, 2, 4, FS1B/30, FS1B/33, HL1B/27
LOW STOCK	FS1B/99J
LENGTH	11"
WEIGHT	85g



ROMAY

Contemporary styled wig featuring front fringe & razored ends.

ORDER CODE: ROMY	
COLS	1, 1B, 2, 4, FS1B/30, FS1B/33
LOW STOCK	FS12/16/613
LENGTH	20"
WEIGHT	140g



NAOMI

Loose glamorous curl pattern, with sweeping, full fringe.

ORDER CODE: NAOMI	
COLS	1, 1B, 2, 4, FS1B/30, FS1B/33
LENGTH	21" (9" front)
WEIGHT	155g



SUELISE

Loose glamorous curls with side parting & side swept fringe detail.

ORDER CODE: SUELISE	
COLS	1, 1B, 2, 4, FS1B/30, FS1B/33
LENGTH	22"
WEIGHT	140g



ROBYN

Ultimate asymmetric bob, with precision cuts, a slightly rounded finish and a soft, satin texture.

ORDER CODE: ROBYN	
COLS	1, 1B, 2, 4, FS1B/30, FS1B/33, HL1B/27
LOW STOCK	FS1B/99J
LENGTH	11"
WEIGHT	90g



VOGUE

Rounded bob style with full front fringe in a silky smooth hair.

ORDER CODE: VOGUE	
COLS	1, 1B, 2, 4, 613, 99J, FS12/16/613, FS1B/30, FS1B/33
LOW STOCK	27, 280, 350
LENGTH	11"
WEIGHT	95g



TONI

Super-short, fashionable pixie style wig with precision cuts.

ORDER CODE: TONI	
COLS	1, 1B, 2, 280, 4, 613, FS1B/30, FS1B/33, FS1B/99J
LENGTH	8"
WEIGHT	80g

GET YOUR FAVOURITES, WHILST THE STOCK LASTS.

Please note the following products are subject to stock availability.

These colours / lines may be discontinued, once sold out.
Some of these products may be available at a reduced price,
please consult your most recent pricelist or your sales
representative for details on price and stock levels.

spotlight
LUXURIOUS WIGS



OPAL
SPOTLIGHT 101
SYNTHETIC,
Tongable Lace
Free 4x4" Parting

ORDER CODE: OPAL	
COLS	1, 1B, 2, 4, 99J, F1B/30, F1B/33, TT1B/30, TT1B/33, TT1B/BLEU/PURPLE, TT4/27
LENGTH	21-23"
WEIGHT	230g



RUBY
SPOTLIGHT 101
SYNTHETIC,
Tongable Lace
Free 4x4" Parting

ORDER CODE: RUBY	
COLS	1, 1B, 2, 4, 99J, F1B/30, F1B/33, TT1B/30, TT1B/33, TT1B/PURPLE, TT4/27
LENGTH	15"
WEIGHT	135g



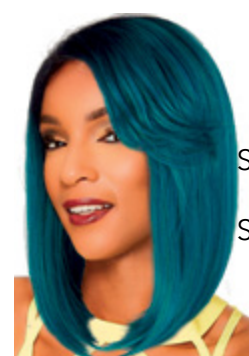
FLAUNT
SPOTLIGHT
101
SYNTHETIC
Tongable
Lace
Parting

ORDER CODE: FLAUN	
COLS	F1B/P30
LENGTH	27"
WEIGHT	180g



VANILLA
SPOTLIGHT
101
SYNTHETIC
Tongable
Lace
Parting

ORDER CODE: VANILLA	
COLS	1, 1B, 2, 4, TT1B/33, TT1B/DARKBLUE
LENGTH	15"
WEIGHT	143g



VENUS
SPOTLIGHT
101
SYNTHETIC
Tongable
Lace
Parting

ORDER CODE: VENUS	
COLS	1, 1B, 2, 4, TT1B/TEAL
LENGTH	15-17"
WEIGHT	180g

**fashion
idol 101**
by Sleek
Premium Wig
100% Premium Tongable Synthetic Fiber



BO - FASHION IDOL 101
PREMIUM SYNTHETIC,
Multi-feature, Tongable Wig

ORDER CODE: BO	
COLS	1, 1B, 2, 4, 99J, DYT1B/30, DYT1B/33, TT4/30
LENGTH	6-10"
WEIGHT	90g



DINA - FASHION IDOL 101
PREMIUM SYNTHETIC,
Tongable Wig

ORDER CODE: DINA	
COLS	1, 1B, 2, 4, DYT1B/30, DYT1B/33, DYT1B/DARKRED, DYT4/613
LENGTH	7-9"
WEIGHT	83g



KIARA WIG - FASHION
IDOL 101 PREMIUM
SYNTHETIC, Tongable Wig

ORDER CODE: KIARA	
COLS	1, 1B, 2, 4
LENGTH	12.5"
WEIGHT	140g

SHANA - FASHION IDOL 101
PREMIUM SYNTHETIC, Tongable Wig

ORDER CODE: SHANA	
COLS	1, 1B, 2, 4, F1B/30, F1B/33, GTGREY, LYTT1B/99J, TT1B/30, LYTT4/27, TT1B/33, TT1B/99J, TT4/27
LENGTH	20"
WEIGHT	196g

**fashion
idol 101**
by Sleek

KARLA -
FASHION IDOL
101 - Synthetic,
Tongable Lace
Wig with baby
hair.



ORDER CODE: KARLA	
COLS	1, 1B, 2, 4, F1B/30, F1B/33, F4/27, F4/27/30, TT1B/33, TT4/27
LENGTH	15"
WEIGHT	143g

