

# HUMAN HAIR WIGS

*Offering a diverse mix of hairstyles, our human hair wigs offer a beautiful range of choice.*

*Discover the Virgin Gold wigs made of the purest 100% Brazilian Virgin Remy Hair, Remy Couture's lace wigs made of the highest quality of Remy Hair, our Spotlight wigs featuring lace partings and some also with a lace front or the affordable Wig Fashion Human Hair Wigs, all stylish and easy to wear.*





# Virgin GOLD

Gold 100% Virgin Human Hair  
by Sleek

The Virgin Gold range is our highest quality grade of human hair wigs.

The Virgin Gold range of Wigs are made from the purest 100% Brazilian Virgin Remy hair.

Like the human hair Virgin Gold weaves, this range of hair has never been chemically treated in our factory & is uncoloured, retaining its natural appearance.

This enables the hair to be re-coloured, heat styled & water friendly. Therefore the range of Virgin Gold Wigs are fantastic to achieve high-quality, customisable & fashionable styles.



Virgin GOLD  
Gold 100% Virgin Human Hair  
by Sleek



BRANDY

Cropped pixie style wig, full with volume and glamorous curls at the top of the crown, shaped to frame the face and add an elegant feel.

ORDER CODE	BRANDY
COLS	1B, 2
LENGTH	8"
WEIGHT	92g



BETRIS

Channel a glamorous cropped hairstyle with Betris. The purest high-quality 100% Brazilian Remy Hair styled into an elegant curl pattern.

ORDER CODE	BETRIS
COLS	1B, 2
LENGTH	11"
WEIGHT	129g



CAMILLI

For a natural crop style, the Camilli Wig is perfect - made from the purest, high quality Brazilian Virgin Remy Hair it oozes quality.

ORDER CODE	CAMILLI
COLS	1B, 2
LENGTH	12"
WEIGHT	125g



KATHY

Afro texture curls in this bohemian style, carefree cropped look - made of high-quality Remy Human Hair.

ORDER CODE	KATHY
COLS	1B, 2
WEIGHT	100g



LARRY

Sleek, smooth side parting fringe, styled to frame the face in this cropped style.

ORDER CODE	LARRY
COLS	1B, 2
LENGTH	8"
WEIGHT	89g



POPPY

Natural wave in this long centre parting Brazilian Virgin Remy Hair - for a look that's easy to customise and super realistic.

ORDER CODE	POPPY
COLS	1B, 2
LENGTH	22"
WEIGHT	214g





ACSA

With side fringe detail, this short rounded bob has a beautiful soft Cork Screw curl, made of 100% pure Virgin Remy Hair.

ORDER CODE: ACSA	
COLS	1B, 2
LENGTH	11"
WEIGHT	125g



DALVA

This tight curl pattern in a short bob style, is made of 100% pure Virgin Remy Hair, for incredibly soft high-quality hair.

ORDER CODE: DALVA	
COLS	1B, 2
LENGTH	12"
WEIGHT	145g

4" LACE PARTING:



JUANA

This gorgeous shoulder length wig is made of top quality Brazilian Remy Hair for premium, quality. Juana also features a lace front & back with a 4" deep parting.

ORDER CODE: JUANA	
COLS	1B, 2
LENGTH	17-18"
WEIGHT	186g

360 LACE (Minus the ears), FREE PARTING OPTION:



JOY

Featuring the highest quality 100% Brazilian Virgin Remy Hair, the Joy Wig also features a lace front & back with a 4" deep parting.

ORDER CODE: JOY	
COLS	1B, 2
LENGTH	28"
WEIGHT	242g



REGINA

Made of the highest quality unprocessed Brazilian Remy Hair, featuring a lace front & back with a 4" deep parting, for a natural appearance. 18"-20" inches.

ORDER CODE	REGI
COLS	1B
LENGTH	20-21"
WEIGHT	211g





Remy Couture's Lace Wigs are made of the highest grade of 100% Remy Hair.

Featuring beautiful hand-tied lace front and back (minus lace around the ears for ease of application) and 4" deep parting these wigs in the Remy Couture Wigs are Sleek's premium human hair wigs and ooze quality and style.

LACE 360 minus the ears, FREE PARTING OPTION:

### LAURAN

The Lauran Wig is super long, glossy hair of the highest quality for less tangling. With a 4" deep free parting, perfect for multiple parting options hand-tied front lace for a realistic finish.



ORDER CODE	LAUR
COL.	1, 1B, 2, 4, 613
LENGTH	23-27"
WEIGHT	245g



### SANNA

Sleek, straight style, the Sanna wig also has top quality Remy Hair, lace front & back, with a 4" deep providing multiple parting options.

ORDER CODE	SANN
COL.	1, 1B, 2, 4, 613, F12/16/613
LENGTH	22-23"
WEIGHT	226g



### LISA

With a gorgeous curl pattern this side flicked fringe with a 4" deep parting, the Lisa wig alludes glamour and sophistication.

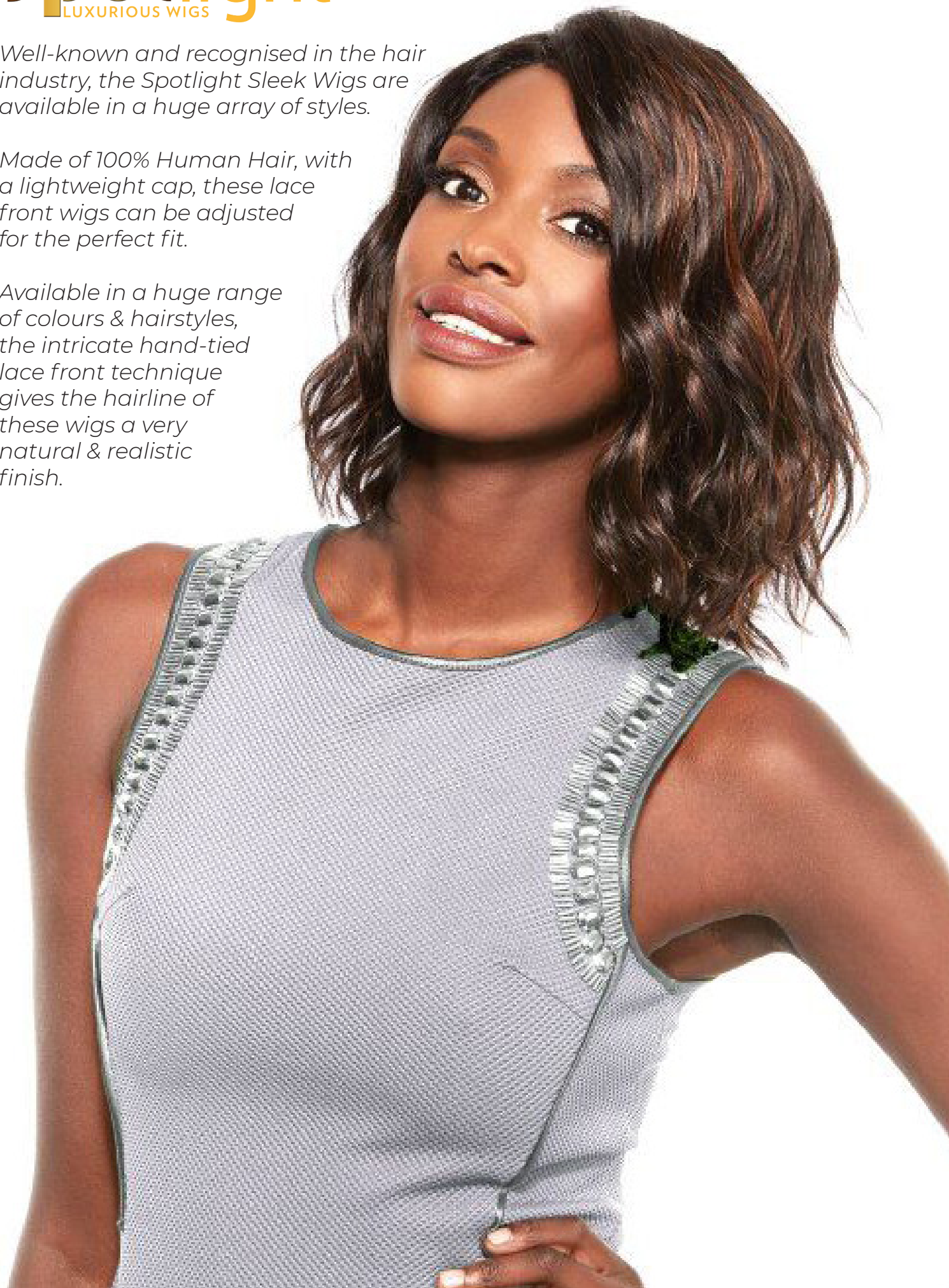
ORDER CODE	LISA
COL.	1, 1B, 2, 4
LENGTH	19-20"
WEIGHT	226g



Well-known and recognised in the hair industry, the Spotlight Slick Wigs are available in a huge array of styles.

Made of 100% Human Hair, with a lightweight cap, these lace front wigs can be adjusted for the perfect fit.

Available in a huge range of colours & hairstyles, the intricate hand-tied lace front technique gives the hairline of these wigs a very natural & realistic finish.



## spotlight LACE PARTING:



ADELE

Angled short bob, which is longer at the front with lace side parting.

ORDER CODE: ADELE	
COLS	1, 1B, 2, 4, TT1B/30, TT1B/99J, TT1B/BLUE, TT1B/RED, TT4/613
LENGTH	11-14"
WEIGHT	137g



ADORA

Long bob straight style, tapered to frame the face with side parting.

ORDER CODE: ADORA	
COLS	1, 1B, 2, 4, TT1B/99J, TT1B/30, TT1B/BLUE, TT1B/RED, TT4/613
LENGTH	10-13"
WEIGHT	126g



DIANA

Layered, long straight wig, with Lace front & 4" lace side parting.

ORDER CODE: DIANA	
COLS	1, 1B, 2, 4, TT1B/30, TT1B/99J
LENGTH	23"
WEIGHT	172g



YAMINA

Beautiful, polished loose waves styled glamorous bob look.

ORDER CODE: YAMINA	
COLS	1, 1B, 2, 4, 613, F12/16/613, F1B/33, TT4/27, TT4/613
LENGTH	11-14"
WEIGHT	140g

## LACE FRONT:



DIVA

Medium length lace front wig with multi-directional parting options for a realistic looking hairline.

ORDER CODE: DIVA	
COLS	1, 1B, 2, 4
LENGTH	13-14.5"
WEIGHT	132-136g



MARSHA

Full of body & texture, the Marsha wig with centre parting for that beautiful natural look.

ORDER CODE: MARS	
COLS	1, 1B, 2, 4, TT1B/30, TT1B/33, 99J
LENGTH	17"
WEIGHT	205g



PIZZAZZ

Lace front wig with multiple parting options, realistic hairline layering around the face.

ORDER CODE: PIZZ	
COLS	1, 1B, 2, 4, 613, F12/16/613
LENGTH	7-17"
WEIGHT	141-145g



STARLET

Smoothed, rounded style bob, framed around the face for this stylish face.

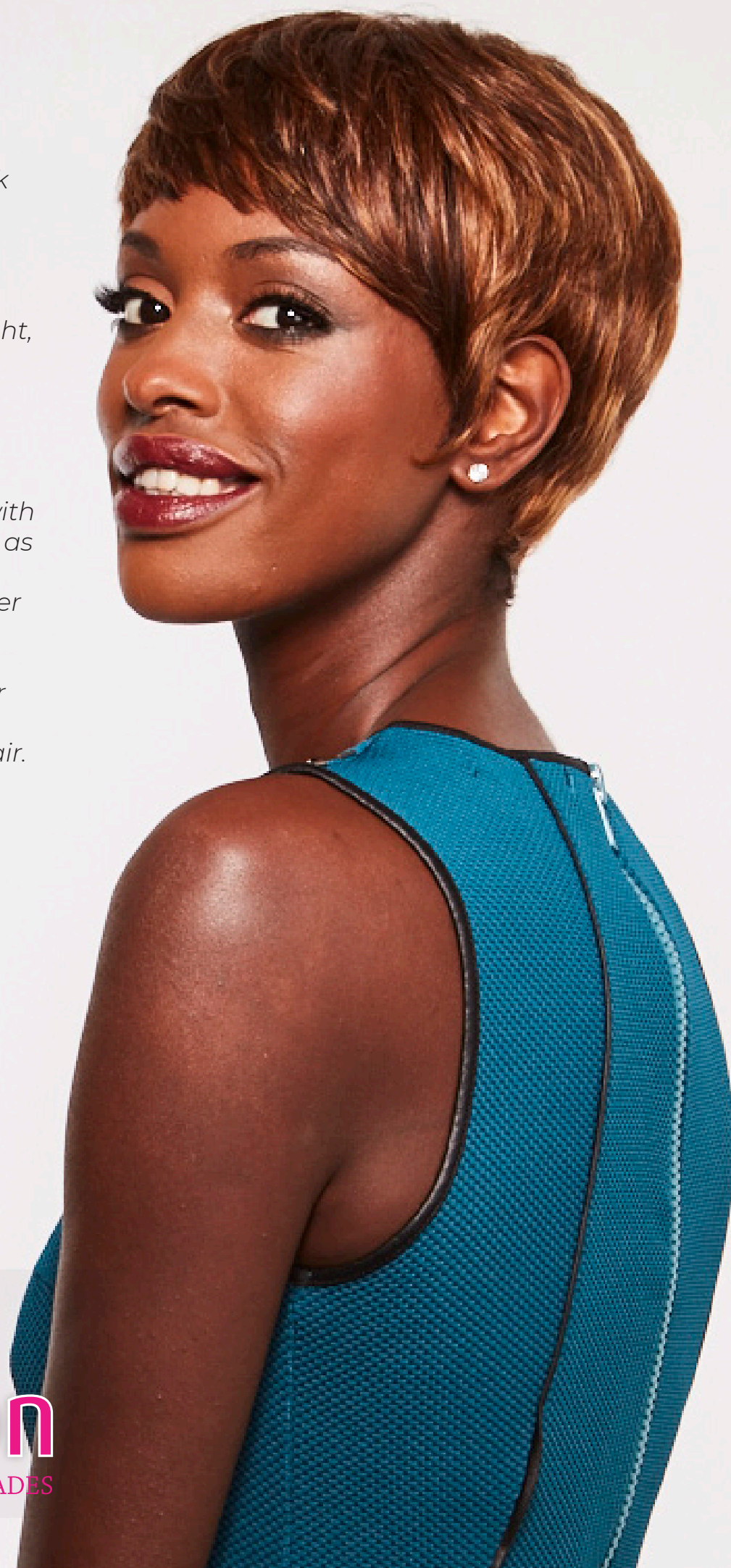
ORDER CODE: STAR	
COLS	1, 1B,
LENGTH	3-7.5"
WEIGHT	88-92g



Made from 100% Human Hair, the Wig Fashion Wigs are designed to look realistic and tangle less.

These wigs are extremely lightweight, easy -to-wear, with adjustable fittings.

This collection is an affordable range of human hair wigs, with special details such as in the darker coloured wigs, darker bases and partings have been used to complement darker skin tones and the realistic shade of hair.



wig  
fashion  
COOL CUTS, SEXY SHADES

wig  
fashion  
COOL CUTS, SEXY SHADES



AUDREY

Ultra chic pixie wig sprinkled all over with little tapered, choppy layers.

ORDER CODE: AUD			
COLS	1, 1B, 2, 4, F1B/30, F1B/33		
LOW STOCK	613, HL1B/FIRE RED		
LENGTH	7"	WEIGHT	65g



ANE

The Ane Wig has that smooth cropped style with side parting that sweeps across the face.

ORDER CODE: ANE	
COLS	1, 1B, 2, 27, 30, 4
LENGTH	8-9"
WEIGHT	105g



BREE

A classic short bobbed style, flicked style for added volume with a side parting and side fringe.

ORDER CODE: BREE	
COLS	1, 1B, 2, 4, F1B/30, F1B/33, FF1B/TURQUOISE/ PURPLE
LENGTH	11-12"
WEIGHT	118g



CECILIA

This silky smooth cheek hugging bob wig features a side sweeping fringe, tapering & razoring at the nape.

ORDER CODE: CEC	
COLS	1, 1B, 2, 4, F1B/30, F1B/33
LENGTH	8"
WEIGHT	76-80g



CHANELLE

Smooth, slick bob style, which features a side fringe that elongates the length at the side.

ORDER CODE: CHANE	
COLS	1, 1B, 2, 4, FS1B/30, FS1B/33, F1B/30
LOW STOCK	DYTT4/30, FS1B/99J,
LENGTH	8-11"
WEIGHT	70-74g



CHIC

The ultimate chic vibes with this side fringe, smooth bob slightly longer style than the Chanelle wig.

ORDER CODE: CHIC	
COLS	1, 1B, 2, 4, DYTT4/30, FS1B/30, FS1B/33
LENGTH	7-11"
WEIGHT	74-78g





ELLA

Smooth, sleek, the Ella wig frames the face, with a sweeping side fringe.

ORDER CODE	ELLA
COLS	1, 1B, 2, 280, 4, 60, FS1B/30, FS1B/33, FS1B/99J, HL1B/PURPLE
LENGTH	6-10"
WEIGHT	76-80g



EVA

Super smooth mini bob tapered around the face, framing it to perfection.

ORDER CODE	EVA
COLS	1, 1B, 2, 4, F1B/30, F4/27
LOW STOCK	39, 99J, DARK RED, F4/30
LENGTH	12"
WEIGHT	85g



EVE

Full volume mid-length bob with a full side fringe in a natural style.

ORDER CODE	EVE
COLS	1, 1B, 2, 4, F1B/30, F1B/33
LENGTH	10-11"
WEIGHT	110g



FLEUR

Tight ringlet curls in this short bob.

ORDER CODE	FLEU
COLS	1, 1B, 2, 4, 99J, F1B/30, F1B/33
LENGTH	12"
WEIGHT	127g



GABRIELLE

Wear the fringe to the side or front to finish this classic style beautifully.

ORDER CODE	GABRI
COLS	1, 1B, 2, 4
LENGTH	20"
WEIGHT	132-136g



GLORIA

Stylised pixie crop style, with cuts and layers styled at the crown of this wig.

ORDER CODE	GLORIA
COLS	1, 1B, 2, 4, FS1B/30, FS1B/33, 280
LENGTH	7"
WEIGHT	75-79g



AFRO

Natural looking afro-textured hair resembling a medium sized 'fro.

ORDER CODE	AFROHH
COLS	1, 1B, 2, 4, FS1B/30, FS1B/33
LENGTH	6.5"
WEIGHT	78-82g



LUPITA

Ultra chic pixie wig featuring little tapered, choppy layers.

ORDER CODE	LUPI
COLS	1, 1B, 2, 4, F1B/30, F1B/33, 99J
WEIGHT	85g



RENEE

Adorable sweeping bob with gently chopped layers sprinkled along the crown.

ORDER CODE	RENEE
COLS	1, 1B, 2, 4, FS1B/30, FS1B/33, DYT4/30
LENGTH	10"
WEIGHT	70-74g



PLATINUM

Shoulder length style with razor cut, outward flicks at its ends for hair with a subtly shaggy finish.

ORDER CODE	PLAT
COLS	1, 1B, 2, 4, 613, F10/16, F12/16/613, F1B/30, F1B/33
LENGTH	15-16"
WEIGHT	121-125g



MIA

Loose thin curl pattern, for a rounded style curl bob, for that relaxed, natural style.

ORDER CODE	MIA
COLS	1, 1B, 2, 4, FS1B/30, FS1B/33
LENGTH	11"
WEIGHT	96-100g



RETRO

Curly bob style, with volume and playfulness at the front in the fringe style.

ORDER CODE	RETRO
COLS	1, 1B, 2, 4, FS1B/30, FS1B/33
LENGTH	9-10"
WEIGHT	83-97g



SARINA

Relaxed wavy style in this short, voluminous bob with straight front, full fringe.

ORDER CODE	SARINA
COLS	1, 1B, 2, 4, TT1B/30
LENGTH	11"
WEIGHT	91g



SUPERB

Straight, slick, long locks with a fringe and centre parting for that classic straight, long hair style.

ORDER CODE	SUPER
COLS	1, 1B, 2, 4, 613, FS12/16/613, FS1B/30, FS1B/33
LENGTH	20-22"
WEIGHT	147-153g



WHITNEY

Short, sassy, corkscrew curls taper off at the nape giving a tousled, bed-head finish

ORDER CODE	WHIT
COLS	1, 1B, 2, 4, F1B/30, F1B/33
LENGTH	11"
WEIGHT	105g



GET YOUR FAVOURITES, WHILST THE STOCK LASTS.

Please note the following products are subject to stock availability.

These colours / lines may be discontinued, once sold out.  
Some of these products may be available at a reduced price,  
please consult your most recent pricelist or your sales  
representative for details on price and stock levels.

**spotlight**  
LUXURIOUS WIGS

LACE PARTING:



POPPY  
SPOTLIGHT  
HUMAN HAIR,  
Lace Parting

ORDER CODE: POPW	
COLS	30, P1B/99J
LENGTH	24-36"
WEIGHT	150g



LOTUS  
SPOTLIGHT  
HUMAN HAIR,  
Lace Parting

ORDER CODE: LOTW	
COLS	1, 1B, 2, 4, P1B/33
LENGTH	18"
WEIGHT	180g

LACE FRONT:



CLOVER - SPOTLIGHT  
HUMAN HAIR Lace Parting

ORDER CODE: CLOVW	
COLS	1, 1B, 2, 4, P1B/30, P1B/33, P4/30
LENGTH	18-20"



ALLURE - SPOTLIGHT  
HUMAN HAIR  
Lace Front

ORDER CODE: ALLUR	
COLS	1, 1B, 2
LENGTH	14-16"
WEIGHT	105g



BEAUTY - SPOTLIGHT  
HUMAN HAIR  
Lace Front

ORDER CODE: BEAUT	
COLS	1, 4, F1B/P30, F1B/P33, F4/P27
LENGTH	14.5"
WEIGHT	107g

wig  
fashion  
COOL CUTS, SEXY SHADES



JACKIE - WIG  
FASHION HUMAN HAIR

ORDER CODE: JACK	
COLS	1, 1B, 4, F1B/30, F1B/33
WEIGHT	96g



NICOLE - WIG  
FASHION HUMAN HAIR

ORDER CODE: NICO	
COLS	1, 1B, 2, 4 99J, F1B/30, F1B/33
WEIGHT	66g



PAULA - WIG  
FASHION HUMAN HAIR

ORDER CODE: PAULA	
COLS	1



TYA - WIG FASHION  
HUMAN HAIR

ORDER CODE: TYA	
COLS	1, 1B, 2, 4

